



Contents

Contents 1

COMPANY 2

ECAPS(Enterprise control and Planning System) 3

 Introduction 3

 Benefits 3

MODULES 4

 Architecture 4

 System Requirements 4

 Data Flow Diagram 5

 Modules Description 6

 PURCHASE 6

 SALES 7

 PRODUCTION 8

 INVENTORY 9

 Financial 10

Support Criteria 11

List of Clients using our ERP Solution 12

COMPANY

Accurate Info Soft Pvt. Ltd. an ISO 9001:2000 company is a premier Software development company with a reputation for quality, superior technical skills and High satisfaction of Customers. We have strong experience in designing, developing and implementing custom business analytical solutions using latest available technologies

Incorporated in 1995, AISPL has been offering customized software solutions for various commercial applications. With the changing trends in technologies and the growing software expectations, we diversified our zone of products & services to meet the requirements of customers from diverse industries.

We have a dedicated state of art software development centre in New Delhi India, with a team of highly motivated IT professionals having extensive domain knowledge with ability to innovate and a strong desire to excel.

Our competitive edge is the combined strengths of our people, processes and technology (PPT). These strengths give us the advantage of delivering strategic value through operational efficiency, and providing cost effective, accurate, timely solutions

We believe in complete solutions. We endeavor to provide end to end solutions to our customers which makes their work easier, more efficient and more cost effective. Our systems are extremely easy to implement, maintain and upgrade.

VISION

- ✓ To be a leading software development company across the globe
- ✓ Invent new solutions , define new markets and offer services that are the best in their class
- ✓ Deliver solutions to customers which helps them meet their business goals by making their work easier and more effective

ECAPS(Enterprise control and Planning System)

Introduction

ECAPS (Enterprise control and Planning System) is a ERP business solution that is easy to customize and implement. It is a single window solution of enterprise where in each and every sections/ departments and locations are integrated in to one. Information flows from one place to another automatically with no repetition of entry. It is based on ISO guidelines therefore it automates business process in a more systematic way and help enterprise to achieve various level of standards in quality. Our ERP Solutions are comprehensive, which covers almost everything that you need to run effective manufacturing starting from the employee entry inside the gate to final product to customer. It does not end here, it also handles customer complaints, quality control, finance, HR, sales & marketing, purchase, inventory, all kinds of forms to meet documentation/tax details like excise, sales tax etc including export & VAT documentation. This is extremely user friendly and flexible to the extent that you do not need the software team every time you come out with new products and can make the additions yourself quickly but at the same time, it has high degree of security/access control. Ultimately, this will help you to increase productivity, better profits.

Benefits

- Helps you concentrate on business by keeping track of Revenue cycles, Purchase cycle etc.
- Helps you plan the business activities by giving you clear view from any angle.
- It can connect your every business premises and give you consolidated view.
- It can give you critical information instantly wherever you are through e-mail and SMS.
- Helps you efficiently manage Man Power, Money flow, Stock and Machinery.

MODULES

ECAPS is classified into following Modules at Macro Level

-  **Purchase**
-  **Sales**
-  **Inventory**
-  **Production**
-  **Finance**
-  **CRM**

Architecture

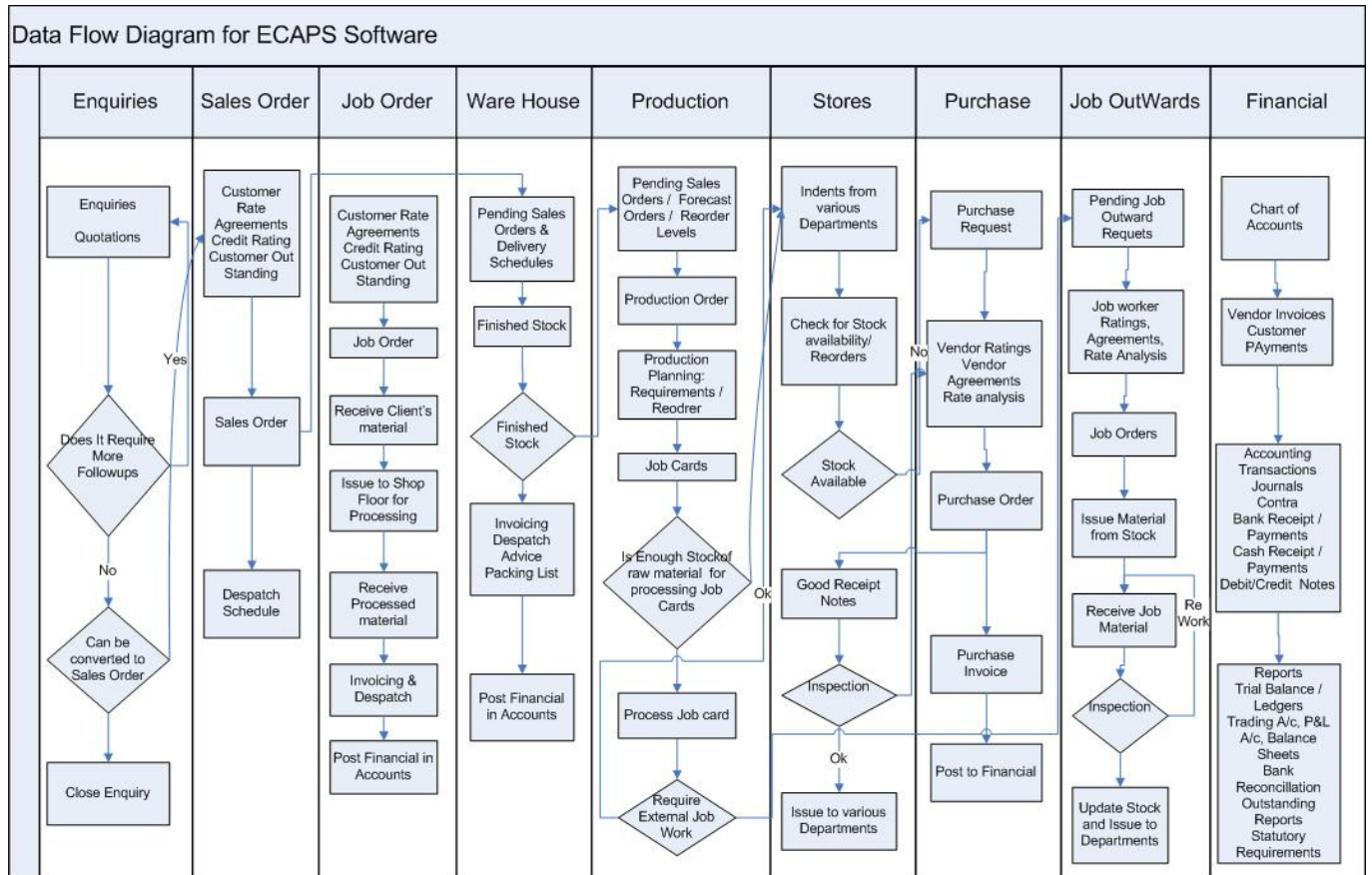
ECAPS is build on 3-tier architecture using latest Microsoft technology framework. Using this tiered approach the solution are easily upgradable and can be integrated to the existing systems with ease. The solution is built upon a robust framework but with very easy to use User interfaces. The reports can easily be customized to suit the user requirements.

System Requirements

Server Machine (Windows 2003 / 2008) with IIS and Microsoft SQL Server(2005 / 2008) , having minimum 4 GB RAM.

Client Machines with Windows Operating System (Windows XP / 2000 / 2003 / Vista / Windows 7) having minimum 512 MB RAM , 100 Mb Hard Disk space

Data Flow Diagram



Modules Description

PURCHASE

Purchasing management consists a group of application that controls purchasing of raw materials needed to build products and that controls the inventory. It also helps creating Purchase orders / contracts, supplier tracking , good receipt and payment , and regulatory compliance analysis and reporting.

Work Flow

1. Recognize, describe, define the Purchase Requirement

Item Wise Purchase Requirement

- ✓ Strategic Or Operational?
- ✓ Repetitive Or Non-Repetitive
- ✓ Automatic generation of PR when the reorder level or min max levels are reached.
- ✓ Delivery Schedules

2. Determine sources, investigate, and select Vendor /analyze bids

- ✓ Request for Quotation from Vendors
- ✓ Quotation Analysis
- ✓ Vendor Analysis according to past history of Vendor.
- ✓ Issue Purchase Order with proper schedules of Payment and Delivery

3. Follow-up the order

- ✓ Keeps track of pending Purchase Order

4. Receive and inspect the material

- ✓ Create MRN/GRN on receipt of material.
- ✓ Acceptance / Rejection of material after different quality checks.

5. Clearance of the invoice and payment to supplier

- ✓ Matching of Purchase invoice with MRN and Purchase Order terms

SALES

ECAPS sales modules encompasses functionality for Sales Order Management , Sales Forecast & Analysis and dispatch to boost up the revenue . It involves order entry, order tracing and status reporting, pricing, invoicing, etc. It also provides a basic functionality for lead tracking, customer information, quote processing, pricing & rebates, etc.

Enquiry / Quotations / Offers

- ✓ Registration of enquiry with various parameters like potential level, budget , category , item attributes.
- ✓ Analysis of enquiry
- ✓ Create offer quotations based on customer past history

Sales order

- ✓ Rule Based pricing , taxes , discounts , charges
- ✓ Scheduling of orders
- ✓ Pending Sales order tracking

Dispatch Instructions

- ✓ Packing and dispatch of finished goods

Invoicing

- ✓ Creation of invoice based on sales order/ dispatches considering all statutory compliances (Excise/Sales Tax/TDS)

Receipts

- ✓ Ageing and outstanding tracking with reminders to customers.
- ✓ Auto calculation of interests.

PRODUCTION

ECAPS Production Module is designed for specific needs of manufacture industries include core capabilities. It facilitates production planning , Taking orders and delivering products to customers.

Bill of Material

- ✓ Definition of product formula
- ✓ Definition of process structure

Material Requirement Planning

- ✓ Raw Material planning based on pending sales order , Stock in Hand
- ✓ Automatic generation of PR for procurement of Raw material

Production Order Management

- ✓ Execution of work order based on different parameters
- ✓ Resource scheduling
- ✓ Production Reporting
- ✓ Recording the production output against the work order
- ✓ Wastage and rework quantity reporting

INVENTORY

ECAPS Inventory modules encompasses functionality for maintaining records ware house goods and processes movement of products to, through and from warehouses.

Material Request management

- ✓ Generation of request for material from various departments
- ✓ Lots and Serialization of material
- ✓ Assignment of lots/ serial no to products at every stage of stock movement

Material Issue

- ✓ Issue material against material request

Material Receipt

- ✓ Receipts of material from vendor
- ✓ Return of material from various departments

Inter warehouse / Location transfers

- ✓ Transfer of material from/to within warehouses

Stock Valuation

- ✓ Physical stock verification
- ✓ Cycle count / stock adjustment

Financial

- ✓ **Multi-Company with option for consolidated view**

General Ledger maintenance

- ✓ **Preparation of Final statements in accordance with Companies Act**
- ✓ **Trial Balance / Trading Account / PL accounts / Balance Sheet**
- ✓ **Bank reconciliations**
- ✓ **Creation and maintenance of budgets**
- ✓ **Multi currency transactions**

Statutory Compliance

- ✓ **Sale Tax / VAT Return**
- ✓ **Excise Return / Register**
- ✓ **TDS Register/ Certificates**

Receivables management

- ✓ **Outstanding and Ageing analysis**
- ✓ **Debit/Credit Notes**

Payable management

- ✓ **Outstanding and Ageing analysis**
- ✓ **Debit/Credit Note**
- ✓ **Hold invoices**

Fixed Assets

- ✓ **Creation of Assets / Tagging**
- ✓ **Sale/Transfer of Fixed Assets**
- ✓ **Calculation of Depreciation as per companies act and Income tax act**

Support Criteria

Level 1 – Average response time 30 minutes during working days (Mon – Sat 11:00 AM to 6 PM).

(For Level 1 support a working Internet connection and a EDP personal is mandatory at the client site. We will take the system remotely from our office and will see the query / bug in the system. And if possible the bug can be rectified there. If it's not possible at that time a support ticket will be raised and the bug will be solved in the predefined committed time)

List of Clients using our ERP Solution

Hospitals

VIMHANS Hospital ,Delhi
Sun Flag Hospital Faridabad
Central Hospital Faridabad
Sunder Lal Jain Hospital Delhi
Sant Parmanand Hospital , Delhi
Belize Healthcare Partners Limited, South America
Soverign Health India Pvt. Ltd., Cochi
Umkal Hospital Gurgaon
Bhagat Hospital Delhi
NMC Hospital NOIDA
Silver Oaks Hospital Mohali
Shri Guri Harkrishan Sahib EYE CARE HOSPITAL Mohali
Dr. Vyas Hospital Falna
MGS Hospital Delhi
Majeedia Hospital (Jamia Hamdard University) Delhi
Prakash Hospital NODIA
Saraswati Hospital FARIDABAD
BhramShakti Hospital Rohini , Bhadurgarh
Pentamed Hospital Delhi
Sheetla Hospital Delhi
Vinayak Hospital NOIDA
Anand Hospital Meerut
Sahara Hospital GWALIOR
Mata Gujri Devi Medical Centre Delhi
Nulife Hospital Delhi
Spring Meadows Hospital Delhi

Real Estate

AMR Infrastructures Ltd.
VXL Realtors Pvt. Ltd.
M2K Infrastructure Pvt Ltd.
Real Gains Estate Pvt. Ltd.
ARN Infrastructures Ltd.
Ninex Developers Ltd.
Jagrit Infrastructure Pvt. Ltd.
Berry Developers & Infrastructure Ltd.
Prop Shopee Pvt. Ltd.
Land Craft Developers Pvt. Ltd.
Dwarkadhish Buildwell Pvt. Ltd.
MVL Ltd.
Shaurya Housing Ltd.

Industries

Deepakshi Display Devices Pvt. Ltd.
Argus Polymers Pvt. Ltd. , Delhi
Kalpa Industries Pvt. Ltd. , Haridwar
Exim Corp India Pvt. Ltd.
Geartech
Prashar Telecom